

Easy Operation

MAC-VIII⁺ Controller

- User-friendly control panel built-in 12-inch touch-screen LCD.
- Quick viewer molding and maintenance.
- Automatic navigation & mode support when an alarm, molding condition.
- Automatic setup feature helps operation to create molding condition easier.
- Bilingual languages: Japanese, English, Chinese, Spanish supported.
- Dimensional units (SI, inch and kgf) available.

A touch panel is adopted for easy operation

Cycle process display

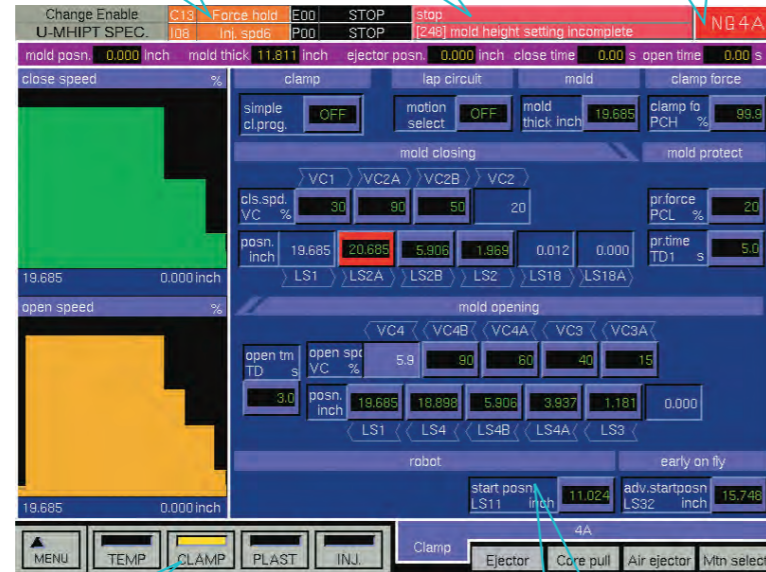
The cycle process is displayed at the top section of the screen and the current cycle condition can be checked at any time.

Alarm display

An alarm indicator is displayed when a fault occurs. A "Current alarm screen" is displayed by touching the alarm indicator.

NG screen

An NG screen indicator is shown when the relationships between setting values are not coordinated. The screen will show the area that has the incorrect setting value when the "NG screen indicator" is touched.



Direct path to main screens

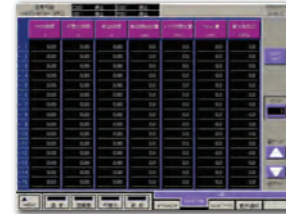
Direct buttons to switch to the four primary molding screens (temperature, clamp opening/closing, injection and plasticizing) are placed at the bottom of the screen thus eliminating complicated screen change operations.

Direct setting

By touching the button of your choice on screen, direct setting of values is possible. This eliminates the need for operating troublesome cursor keys.

- Easy Monitoring and Data Collection PacketMAC (optional)
Convert data from the MAC-VIII⁺ panel controller into CSV format, save it to USB memory, and analyse and or edit it at your computer.

Typical example of trend list display



Typical example of CSV data display



MMMX

SERIES

1200/1450/1800/2200/2800/3300/3900

New Leading-Edge Machines Deliver High Performance at Lower Cost

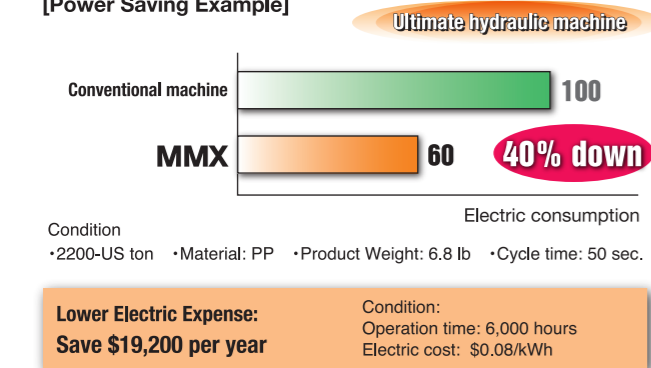
U-MHIPT “MMX series” combines the latest technologies with experienced two-platen clamping and injection mechanism, and delivers excellent, performance, at a lower cost.

Power Saving Mechanism

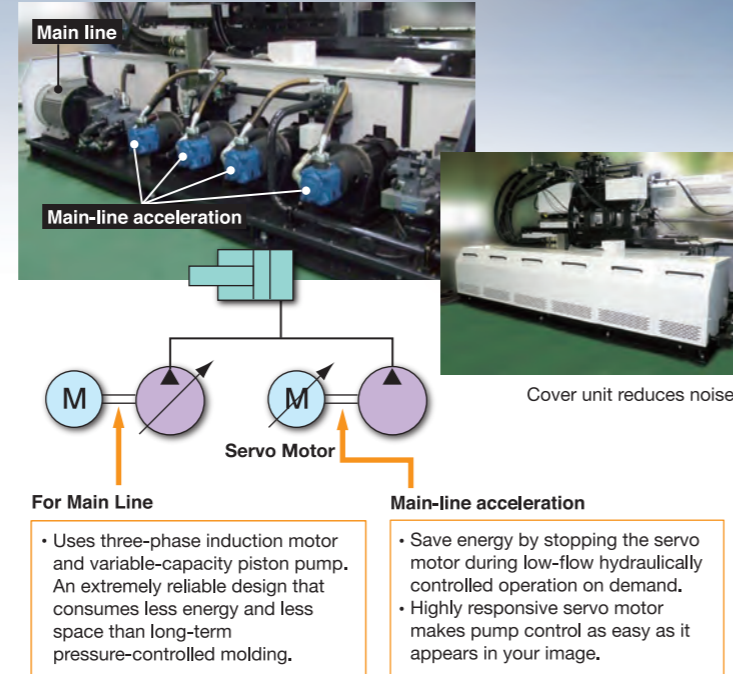
Smart Pump System

- Our original “smart pump” system runs less energy than other hybrid systems, while delivering powerful and repeatable operation.
- Lower energy consumption comparing to conventional hydraulic injection molding machine.
- “Smart pump” system and special noise cover make noise reduced.
- Simple piping layout significantly effects less maintenance work, comparing to other hydraulic machines.

[Power Saving Example]



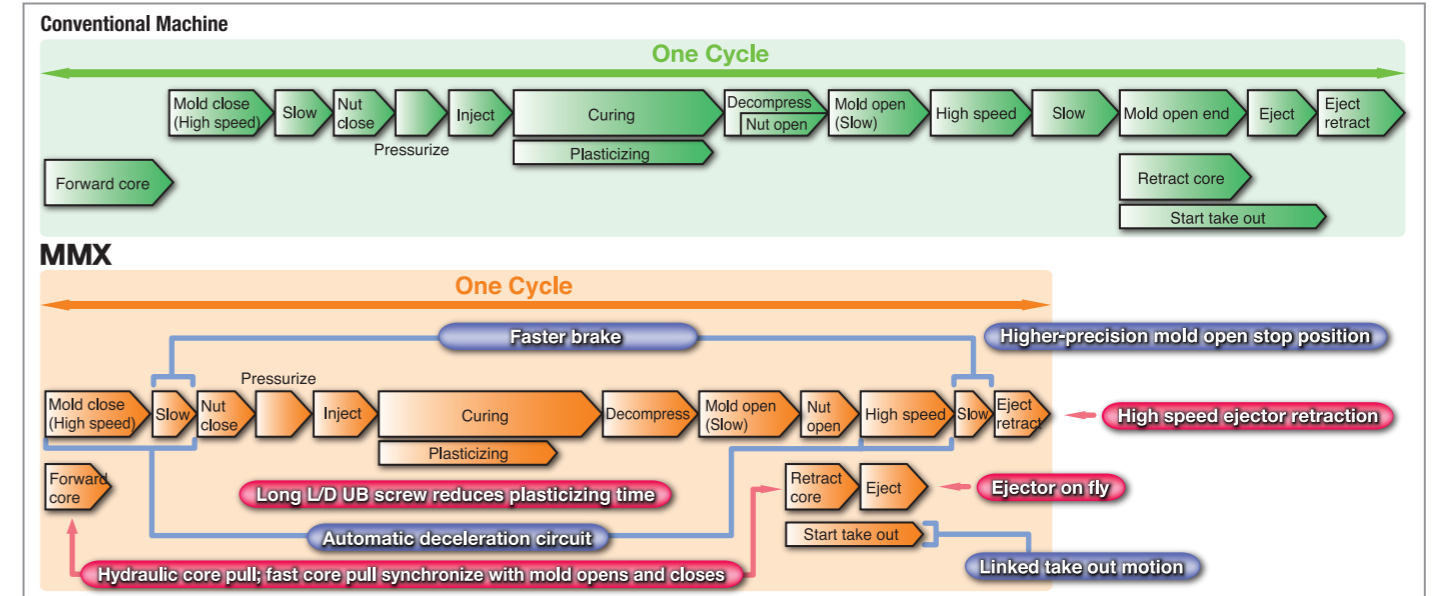
[Smart Pump System]



High Productivity

High Cycle Molding

- High cycle feature, included as standard, it will boost your productivity.
- High speed open/close/High speed ejector motion/ High speed mold-close pressurization
- Long L/D UB screw
- Electric-powered plasticizing lap circuit (optional)
- Ejector on fly
- High-capacity hydraulic core-pull pump
- Simultaneous hydraulic core-pull

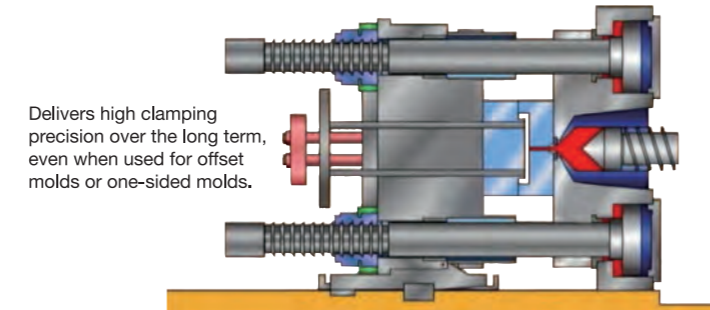


High Quality & Reliability

4-Point 2-Platen Clamping Mechanism

- Four-point tie-bar clamping easily tolerates unbalanced load, offering same excellent reliability as our experienced technology.
- Light, rigid platen incorporates U-MHIPT’s sophisticated analytic technologies.
- Two-platen clamping mechanism saves space meantime wide platens and long daylight are adapted.

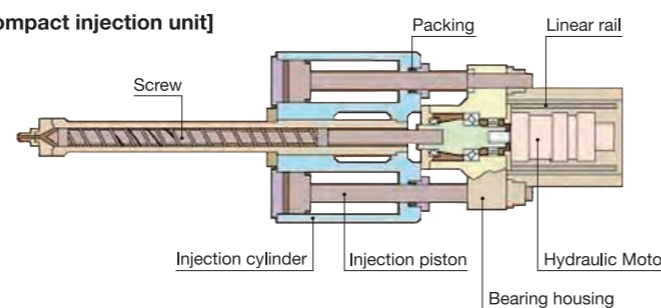
[4-Point Uniform Tie-Bar Clamping]



Reliable and Compact Injection Unit

- The size is reduced by positioning hydraulic cylinders at both sides of the screw. Since the piston doesn’t rotate, longer lifetime of packing is expected.
- Linear rail is adapted for bearing housing support to create repeatable action, delivering very stable injection at low energy consumption.

[Compact injection unit]



Smart Pump System

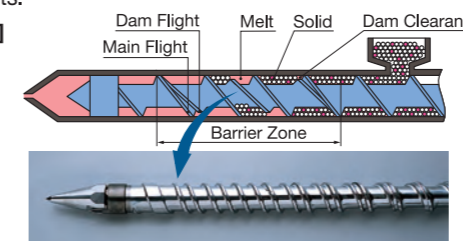
- Feedback control effectively stabilizes hydraulic oil flow and pressure, delivering extreme repeatability.

Material Cost Saving

UB Screw

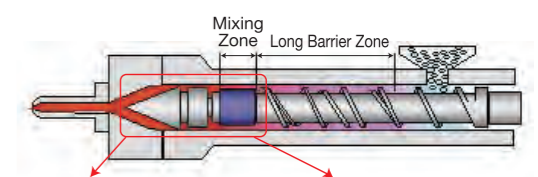
- Our original screw design features long barrier zone and dam configuration for separation of the melted and solid resin. The design offers superlative and energy-efficient kneading and plasticizing performance.
- Solid-free plasticizing enables high-multiple master batch molding and significantly expands the range of usable colorants—contributing to lower overall material costs.

[Screw Design]



Super High Mixing Screw (optional)

- Offers even better mixing performance...



MD (multi-dam) UB Screw



“Multi-dam” screw, with polygonal cross-section, delivers a new level of uniform fusing.

MF (multi-finned) UB Screw



Dulmage-type screw, with distinctive fin layout, delivers high-level mixing.